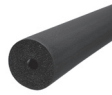


JONES STEPHENS RUBBER PIPE INSULATION



Seamless Rubber Pipe Insulation



3/8" WALL THICKNESS



PART NO.	Insulation Nominal ID	CTS (Nom. ID Plumbing)	CTS (OD HVAC/R)	IPS	FT/ BOX	LIST PRICE
I60025	1/4"	1/8"	1/4"	--	630'	\$443.68
I60038	3/8"	1/4"	3/8"	1/8"	612'	\$403.53
I60050	1/2"	3/8"	1/2"	1/4"	432'	\$305.02
I60058	5/8"	1/2"	5/8"	3/8"	378'	\$306.97
I60075	3/4"	5/8"	3/4"	--	342'	\$294.31
I60078	7/8"	3/4"	7/8"	1/2"	288'	\$260.26
I60118	1-1/8"	1"	1-1/8"	3/4"	216'	\$204.90
I60138	1-3/8"	1-1/4"	1-3/8"	1"	168'	\$181.10
I60158	1-5/8"	1-1/2"	1-5/8"	1-1/4"	150'	\$200.51
I60200	2"	--	--	1-1/2"	120'	\$168.81
I60218	2-1/8"	2"	2-1/8"	--	96'	\$169.55
I60250	2-3/8"	--	--	2"	84'	\$175.67
I60258	2-5/8"	2-1/2"	2-5/8"	--	72'	\$171.76
I60300	2-7/8"	--	--	2-1/2"	60'	\$158.25
I60318	3-1/8"	3"	3-1/8"	--	60'	\$169.14
I60350	3-1/2"	--	--	3"	48'	\$139.69

1/2" WALL THICKNESS

PART NO.	Insulation Nominal ID	CTS (Nom. ID Plumbing)	CTS (OD HVAC/R)	IPS	FT/ BOX	LIST PRICE
I61025	1/4"	1/8"	1/4"	--	510'	\$391.59
I61038	3/8"	1/4"	3/8"	1/8"	456'	\$425.18
I61050	1/2"	3/8"	1/2"	1/4"	360'	\$357.67
I61058	5/8"	1/2"	5/8"	3/8"	324'	\$355.09
I61075	3/4"	5/8"	3/4"	--	270'	\$305.60
I61078	7/8"	3/4"	7/8"	1/2"	228'	\$279.76
I61118	1-1/8"	1"	1-1/8"	3/4"	156'	\$213.85
I61138	1-3/8"	1-1/4"	1-3/8"	1"	120'	\$180.66
I61158	1-5/8"	1-1/2"	1-5/8"	1-1/4"	114'	\$199.48
I61200	2"	--	--	1-1/2"	114'	\$241.29
I61218	2-1/8"	2"	2-1/8"	--	102'	\$233.12
I61250	2-3/8"	--	--	2"	66'	\$178.80
I61258	2-5/8"	2-1/2"	2-5/8"	--	60'	\$181.55
I61300	2-7/8"	--	--	2-1/2"	48'	\$164.22
I61318	3-1/8"	3"	3-1/8"	--	48'	\$171.76
I61350	3-1/2"	--	--	3"	36'	\$137.11
I61358	3-5/8"	3-1/2"	3-5/8"	--	36'	\$172.11
I61418	4-1/8"	4"	4-1/8"	3-1/2"	24'	\$126.95
I61450	4-1/2"	--	--	4"	24'	\$136.02

3/4" WALL THICKNESS

PART NO.	Insulation Nominal ID	CTS (Nom. ID Plumbing)	CTS (OD HVAC/R)	IPS	FT/ BOX	LIST PRICE
I62025	1/4"	1/8"	1/4"	--	240'	\$263.94
I62038	3/8"	1/4"	3/8"	1/8"	228'	\$307.80
I62050	1/2"	3/8"	1/2"	1/4"	228'	\$351.85
I62058	5/8"	1/2"	5/8"	3/8"	180'	\$303.33
I62075	3/4"	5/8"	3/4"	--	144'	\$265.96
I62078	7/8"	3/4"	7/8"	1/2"	126'	\$253.99
I62118	1-1/8"	1"	1-1/8"	3/4"	90'	\$222.17
I62138	1-3/8"	1-1/4"	1-3/8"	1"	78'	\$219.58
I62158	1-5/8"	1-1/2"	1-5/8"	1-1/4"	72'	\$273.18
I62200	2"	--	--	1-1/2"	66'	\$283.52
I62218	2-1/8"	2"	2-1/8"	--	60'	\$282.00
I62250	2-3/8"	--	--	2"	48'	\$242.23
I62258	2-5/8"	2-1/2"	2-5/8"	--	42'	\$248.34
I62300	2-7/8"	--	--	2-1/2"	36'	\$242.67
I62318	3-1/8"	3"	3-1/8"	--	36'	\$247.85
I62350	3-1/2"	--	--	3"	30'	\$230.74
I62358	3-5/8"	3-1/2"	3-5/8"	--	30'	\$260.02
I62418	4-1/8"	4"	4-1/8"	3-1/2"	24'	\$220.00
I62450	4-1/2"	--	--	4"	24'	\$233.97

- Closed cell flexible elastomeric foam insulation tubes
- Seamless - Non-slit for slide-on applications
- Self-Sealing - (Pre-Slit / Pre-Glued / DoubleSeal closure system) for retrofit applications
- For use on HVAC/R, commercial, and industrial process piping and equipment
- For most indoor applications, no additional jacketing is required
- High resistance to moisture vapor intrusion; low thermal conductivity
- CARTON QUANTITIES ONLY

SPECIFICATIONS:

Temp Range: -297°F (-183°C) to +220°F (+104°C)

Flame/Smoke: ASTM E84 25/50-rated (to 2")

Water Vapor Permeability: <0.01 perm-in

Density: 3-6 lb/cubic ft

Mold growth: None

Ozone Resistance: Good

1" WALL THICKNESS

PART NO.	Insulation Nominal ID	CTS (Nom. ID Plumbing)	CTS (OD HVAC/R)	IPS	FT/ BOX	LIST PRICE
I63025	1/4"	1/8"	1/4"	--	120'	\$267.42
I63038	3/8"	1/4"	3/8"	1/8"	120'	\$246.98
I63050	1/2"	3/8"	1/2"	1/4"	114'	\$239.40
I63058	5/8"	1/2"	5/8"	3/8"	108'	\$231.08
I63075	3/4"	5/8"	3/4"	--	108'	\$269.94
I63078	7/8"	3/4"	7/8"	1/2"	90'	\$353.63
I63118	1-1/8"	1"	1-1/8"	3/4"	66'	\$315.06
I63138	1-3/8"	1-1/4"	1-3/8"	1"	60'	\$333.31
I63158	1-5/8"	1-1/2"	1-5/8"	1-1/4"	54'	\$338.69
I63200	2"	--	--	1-1/2"	42'	\$306.04
I63218	2-1/8"	2"	2-1/8"	--	42'	\$324.54
I63250	2-3/8"	--	--	2"	36'	\$350.82
I63258	2-5/8"	2-1/2"	2-5/8"	--	36'	\$396.62
I63300	2-7/8"	--	--	2-1/2"	36'	\$457.46
I63318	3-1/8"	3"	3-1/8"	--	30'	\$400.37
I63350	3-1/2"	--	--	3"	30'	\$423.65
I63358	3-5/8"	3-1/2"	3-5/8"	--	30'	\$437.61
I63418	4-1/8"	4"	4-1/8"	3-1/2"	18'	\$270.00

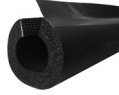
1-1/2" WALL THICKNESS

PART NO.	Insulation Nominal ID	CTS (Nom. ID Plumbing)	CTS (OD HVAC/R)	IPS	FT/ BOX	LIST PRICE
I64050	1/2"	3/8"	1/2"	1/4"	48'	\$356.09
I64058	5/8"	1/2"	5/8"	3/8"	48'	\$365.48
I64075	3/4"	5/8"	3/4"	--	48'	\$410.88
I64078	7/8"	3/4"	7/8"	1/2"	48'	\$410.18
I64118	1-1/8"	1"	1-1/8"	3/4"	36'	\$366.10
I64138	1-3/8"	1-1/4"	1-3/8"	1"	36'	\$447.92
I64158	1-5/8"	1-1/2"	1-5/8"	1-1/4"	36'	\$493.76

See reverse side for additional product listing!

JONES STEPHENS RUBBER PIPE INSULATION

Double Stick Rubber Pipe Insulation



3/8" WALL THICKNESS



PART NO.	Insulation Nominal ID	CTS (Nom. ID Plumbing)	CTS (OD HVAC/R)	IPS	FT/ BOX	LIST PRICE
I80038	3/8"	1/4"	3/8"	1/8"	570'	\$596.01
I80058	5/8"	1/2"	5/8"	3/8"	348'	\$477.66
I80034	3/4"	5/8"	3/4"	--	318'	\$529.05
I80078	7/8"	3/4"	7/8"	1/2"	288'	\$443.96
I80118	1-1/8"	1"	1-1/8"	3/4"	216'	\$379.53
I80138	1-3/8"	1-1/4"	1-3/8"	1"	150'	\$310.46
I80150	2"	--	--	1-1/2"	120'	\$282.86
I80158	1-5/8"	1-1/2"	1-5/8"	1-1/4"	132'	\$379.53
I80218	2-1/8"	2"	2-1/8"	--	78'	\$232.77
I80200	2-3/8"	--	--	2"	78'	\$307.88

1/2" WALL THICKNESS

PART NO.	Insulation Nominal ID	CTS (Nom. ID Plumbing)	CTS (OD HVAC/R)	IPS	FT/ BOX	LIST PRICE
I81038	3/8"	1/4"	3/8"	1/8"	420'	\$621.03
I81050	1/2"	3/8"	1/2"	1/4"	312'	\$517.39
I81058	5/8"	1/2"	5/8"	3/8"	312'	\$650.23
I81034	3/4"	5/8"	3/4"	--	270'	\$512.72
I81078	7/8"	3/4"	7/8"	1/2"	216'	\$490.53
I81118	1-1/8"	1"	1-1/8"	3/4"	150'	\$381.33
I81138	1-3/8"	1-1/4"	1-3/8"	1"	120'	\$341.53
I81150	2"	--	--	1-1/2"	108'	\$382.65
I81158	1-5/8"	1-1/2"	1-5/8"	1-1/4"	108'	\$442.80
I81218	2-1/8"	2"	2-1/8"	--	102'	\$474.30
I81200	2-3/8"	--	--	2"	60'	\$306.78
I81258	2-5/8"	2-1/2"	2-5/8"	--	60'	\$347.97
I81250	2-7/8"	--	--	2-1/2"	48'	\$307.86
I81318	3-1/8"	3"	3-1/8"	--	48'	\$328.47
I81300	3-1/2"	--	--	3"	36'	\$259.28
I81358	3-5/8"	3-1/2"	3-5/8"	--	36'	\$265.49
I81418	4-1/8"	4"	4-1/8"	3-1/2"	24'	\$214.67
I81400	4-1/2"	--	--	4"	24'	\$221.75

3/4" WALL THICKNESS

PART NO.	Insulation Nominal ID	CTS (Nom. ID Plumbing)	CTS (OD HVAC/R)	IPS	FT/ BOX	LIST PRICE
I82038	3/8"	1/4"	3/8"	1/8"	228'	\$700.86
I82050	1/2"	3/8"	1/2"	1/4"	192'	\$562.97
I82058	5/8"	1/2"	5/8"	3/8"	180'	\$509.31
I82034	3/4"	5/8"	3/4"	--	120'	\$411.14
I82078	7/8"	3/4"	7/8"	1/2"	126'	\$570.46
I82118	1-1/8"	1"	1-1/8"	3/4"	90'	\$440.54
I82100	1-3/8"	1-1/4"	1-3/8"	1"	78'	\$381.42
I82158	1-5/8"	1-1/2"	1-5/8"	1-1/4"	72'	\$352.76
I82150	2"	--	--	1-1/2"	66'	\$357.22
I82218	2-1/8"	2"	2-1/8"	--	60'	\$367.20
I82200	2-3/8"	--	--	2"	48'	\$315.36
I82258	2-5/8"	2-1/2"	2-5/8"	--	42'	\$299.12
I82250	2-7/8"	--	--	2-1/2"	36'	\$289.80
I82318	3-1/8"	3"	3-1/8"	--	36'	\$325.80
I82358	3-5/8"	3-1/2"	3-5/8"	--	30'	\$294.72
I82418	4-1/8"	4"	4-1/8"	3-1/2"	24'	\$293.13
I82400	4-1/2"	--	--	4"	24'	\$312.00

1" WALL THICKNESS

PART NO.	Insulation Nominal ID	CTS (Nom. ID Plumbing)	CTS (OD HVAC/R)	IPS	FT/ BOX	LIST PRICE
I83058	5/8"	1/2"	5/8"	3/8"	108'	\$472.49
I83034	3/4"	5/8"	3/4"	--	78'	\$343.89
I83078	7/8"	3/4"	7/8"	1/2"	78'	\$434.42
I83118	1-1/8"	1"	1-1/8"	3/4"	66'	\$397.83
I83138	1-3/8"	1-1/4"	1-3/8"	1"	60'	\$506.43
I83158	1-5/8"	1-1/2"	1-5/8"	1-1/4"	42'	\$315.49
I83150	2"	--	--	1-1/2"	42'	\$358.18
I83218	2-1/8"	2"	2-1/8"	--	42'	\$370.95
I83200	2-3/8"	--	--	2"	36'	\$384.65
I83250	2-7/8"	--	--	2-1/2"	36'	\$508.68
I83358	3-5/8"	3-1/2"	3-5/8"	--	30'	\$480.67
I83418	4-1/8"	4"	4-1/8"	3-1/2"	18'	\$355.31

Rubber Insulation Roll

- Closed cell flexible elastomeric foam insulation rolls
- For use on HVAC/R and industrial process ductwork, vessels, equipment and large ID piping (>8" IPS)
- High resistance to moisture vapor intrusion; low thermal conductivity
- For most indoor applications, no additional jacketing is required
- Available as S2S (skin-two-side)
- CARTON QUANTITIES ONLY



PART NO.	DESCRIPTION	CTS (OD HVAC/R)	SQ FT/BOX	LIST PRICE
IR1470	1/2" thick x 4' x 70' roll	5/8"	280'	\$999.14
IR5415	2" thick x 4' x 15' roll	3/4"	60'	\$1,770.23

Titan™ Seamless UV Resistant Rubber Pipe Insulation



- Closed cell elastomeric foam NBR/PVC tube with flexible polymeric jacketing material
- Ideal for outdoor applications: UV resistant, tear resistant, weather resistant
- 1-Step Install: No field applied protective coating or additional jacketing required
- CARTON QUANTITIES ONLY

1/2" WALL THICKNESS

PART NO.	Insulation Nominal ID	CTS (Nom. ID Plumbing)	CTS (OD HVAC/R)	IPS	FT/ BOX	LIST PRICE
I91025	1/4"	--	1/4"	--	510'	\$816.36
I91038	3/8"	1/4"	3/8"	1/8"	456'	\$718.46
I91050	1/2"	3/8"	1/2"	1/4"	360'	\$652.88
I91058	5/8"	1/2"	5/8"	3/8"	324'	\$647.32
I91075	3/4"	5/8"	3/4"	--	270'	\$557.46
I91078	7/8"	3/4"	7/8"	1/2"	228'	\$512.67
I91118	1-1/8"	1"	1-1/8"	3/4"	156'	\$393.73
I91138	1-3/8"	1-1/4"	1-3/8"	1"	120'	\$329.77

3/4" WALL THICKNESS

PART NO.	Insulation Nominal ID	CTS (Nom. ID Plumbing)	CTS (OD HVAC/R)	IPS	FT/ BOX	LIST PRICE
I92050	1/2"	3/8"	1/2"	1/4"	228'	\$649.70
I92058	5/8"	1/2"	5/8"	3/8"	180'	\$559.51
I92075	3/4"	5/8"	3/4"	--	144'	\$485.96
I92078	7/8"	3/4"	7/8"	1/2"	126'	\$469.34
I92118	1-1/8"	1"	1-1/8"	3/4"	90'	\$402.92
I92138	1-3/8"	1-1/4"	1-3/8"	1"	78'	\$405.87
I92158	1-5/8"	1-1/2"	1-5/8"	1-1/4"	72'	\$515.25

Visit www.jonesstephens.com for product specification sheets.

Contact your local Jones Stephens sales representative to order today!

