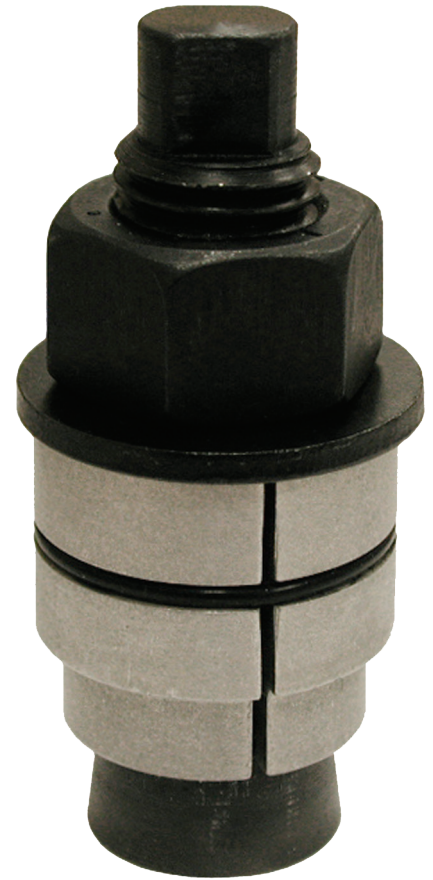


Extract-a-Drain

Tub Drain Removal Tool

Part No. J40018

- Removes old or rusty drains - even drains with missing crossbars!
- Fits both 1 1/4" and 1 1/2" tub drains
- Jaws expand to firmly grip the inside of the drain
- Prevents damage to your tub's finish
- A wrench is the only other tool that you'll need to complete this job



Easy as 1-2-3

Instructions

Step 1



Insert into any 1 1/4" or 1 1/2" tub drain.

Step 2



Expand the jaws against the inside of the walls of the tub drain until snug.

Step 3



Using a wrench, slowly turn the hex nut counterclockwise until either the drain breaks free or the nut stops. Once clear of the drain, tap swiftly and firmly on top of the drive screw to release the tool from the drain.

00862-01



JSC South
3249 Moody Parkway
Moody, AL 35004
Phone 800-355-6637
Fax 800-462-6991

JSC North
50 Keystone Blvd. East
Pottsville, PA 17901
Phone 800-325-8999
Fax 866-922-0076